

PICKIN' 2019

ON PICKNICS



GRINNER'S GUIDE

THANK YOU TO OUR SPONSORS



THANK YOU TO OUR COMMUNITY PARTNERS



THANK YOU TO OUR VENUE PARTNERS



Pickin' On Music Festivals began in 2015 with the first Pickin' On event, *Pickin' On the Courtois*, hosted at Bass River Resort. We built the idea around inviting our favorite musicians and friends to a weekend camp out and pickin' party along the banks of Missouri's scenic riverways, where the music and the smiles never stop. After a successful first year, we decided this was too big and exciting to not continue year after year. We work year round to bring you new and exciting music, scenery, activities and memories to share with your friends and family. Bringing people together through the love of music is what the Pickin' On Festivals are all about; with artist-led workshops and campfire jams, we celebrate talented musicians and lovers of music alike.

Since 2015 we have Pick'd on The Meramec, The Mississippi, The Huzzah and The Courtois. In 4 years, the Pickin' On Family and Crew has grown and we hope you will join us for everything that is yet to come. We have found a home here at Lost Hill Lake and we plan to host more events here in 2020! Stay tuned to pickinfestival.com and our social media platforms to stay up to date.

We hope you find the same love for Lost Hill Lake as we have. Founders Niki Fox and Ryan Kemp were married here in 2015. Samantha and Rob Williford have open their arms and hearts to the Pickin' On Crew. We appreciate that more than they will ever know. Of course none of this would be possible without property owner Bob Norman's forethought into creating this space for us all to enjoy.

Pick On!



Lost Hill Lake Events is a private oasis that offers an intimate outdoor setting for *Pickin' On Picknic*. The Norman/Williford family welcomes guests to experience their 10-acre location that includes the gorgeous Meramec River and a memorable 50-year-old shady walnut grove. They encourage pickers to utilize the 15-acre lake and enjoy the natural beauty all around. The farm was purchased by Bob Norman and family in May 1967 and Bob has been working ever since to create the outdoor playground that is Lost Hill Lake. Currently Bob, his daughter Samantha, her husband Rob, their son Robby and 6 rescue dogs all live, work and play on the property. Make sure to stop by and say "hi" at the Picknic! Lost Hill Lake Events will be providing a General Store for *Pickin' On Picknic*. Ice, fire wood, boxed water, fresh farm produce and daily essentials will be for sale at the store. A complimentary reusable water bottle station will also be provided at the store. The store is located under the large pavilion.

Environmental Impact - Planning and participating in music festival events such as *Pickin'* can leave a huge environmental impact. We wish to make conscious choices and do our part where possible and ask that you join us in our efforts as we all share this planet. Our vendors are using all compostable goods, Boxed Water has been a kind sponsor to lessen the impact single use plastic waste and Better Life cleaning products has made sure that clean up is earth friendly as well. So please recycle when possible, don't litter and if you see trash out of place....go ahead and pick it up!!

Check out boxedwaterisbetter.com and cleanhappens.com for more info on our eco-warrior sponsors!

Thanks for joining us!

Curator & Event Producer

Ryan Kemp

Festival Operations Director

Niki Fox

Finance & Business Director

Derrick Weisbrod

Creative Director

Lee Kern

Marketing & Sponsorship Director

Kara Nagel

Social Media & Advertising Director

Emma Dawson



Photocredit: Randal Hicks, Windy Brick Photography

A FEW PICKIN' POINTERS

- Park it and leave it, we try to keep vehicle traffic at a minimum for safety. Please park in day parking if you anticipate leaving during the weekend.
- If our fire isn't big enough for you, you may have one of your own at your campsite but it must be in a ring (and you must supply).
- We take responsible pet care very seriously. If you cannot look after and care for the well being of your pet you will be asked to leave the event. Keep in mind it is July, DO NOT leave your pets in your vehicle!! Well behaved dogs are allowed and MUST be on a leash at all times. We expect you to pick up after your pets and help keep the property clean.
- Feel free to bring chairs or blankets into the shady grove concert area. If you wish, you may leave your chair in place at the stage area for the duration of the event. Expect to share your seat when away. If you have a seat in someone's chair, please kindly and promptly get up when the owner returns. This is musical chairs at its finest!
- Please bring your acoustic stringed instrument to participate in late night campfire jams and workshops throughout the weekend. Spontaneous pickin' everywhere!
- We like to keep it clean, litter is gross. PLEASE DISPOSE OF WASTE APPROPRIATELY.
- Extra cash is recommended as some vendors might not accept credit/debit cards, no ATM on site.
- **Alcohol is not permitted to be brought into the stage area, coolers will be searched upon entry.**

- We hope there is no need, but if an emergency arises call 911. You may also find any festival staff or security which will be wearing a staff tag or anyone with a radio.
- A good attitude and dancing shoes will get you far.
- Pace yourself and stick around until the end. At the end of Friday and Saturday nights' stage music we will hold our traditional igniting of a grand fire with many jams for everyone to participate in through the early morning hours.

THE “NO” SECTION (Sorry, we have to)

- NO glass
- NO weapons or firearms
- NO fireworks
- NO personal golf carts, ATV's, dirtbikes
- NO Illegal drugs
- NO bad attitudes
- NO drones, NO video taping/streaming
- NO outside alcohol in the stage areas
- NO littering (including cigarette butts)

EAT, DRINK, AND BE PREPARED

- We have many food and craft vendors on site, please support our local entrepreneurs!
- We will have a bar in the Shady Grove with local beer and spirits for purchase at reasonable prices. **You cannot bring outside alcohol into the stage areas.**
- Ice & general goods are available for purchase on site under the large pavilion.

LOCAL AMENITIES

We've got [pretty much] everything you could ever need right here at the *Pickin' On Picknic*. But if you must leave...

Where to stay:

Budget Lodging
866 S Outer Rd, St Clair, MO

Super 8
1010 S Outer Rd, St Clair, MO

Where to shop:

R&R Ace Hardware
845 N Commercial Ave, St Clair, MO

Save-A-Lot
1100 N Commercial Ave, St Clair, MO

Country Mart
925 St Clair Plaza Dr, St Clair, MO

Sinks Pharmacy
1435 N Main St, St Clair, MO

St. Clair Package Liquor
505 N Commercial Ave, St Clair, MO

Good Times Market
1277 Gravois Rd, Saint Clair, MO



IN LOVING MEMORY TOMMY COMBS 1950-2018

We lost a great friend this year. Tommy Combs was an integral part in Pickin' On Music Festivals existence. I was first exposed to the bluegrass family and tradition through the hospitality shown at Tommy Combs' infamous full moon picks. Friends would gather around the campfire, sip on some 'shine, and sing and pick 'til the sun came up. The songs and the music seemed to pass through the ages like the water flows down the Big River. Tommy showed us many things: how to laugh, how to love, and how to have a good time sharing stories and songs.

The inaugural *Pickin' On the Courtois* was an attempt to reunite The Meramec Jets (the band that Tommy played banjo in). We did not succeed that year but it did not stop us from trying to get Tommy there. It wasn't until year 3 that Tommy finally showed face at the festival and from then on, he was hooked. Tommy didn't miss another event.

My fondest memory of Tommy was at *Pickin' On The Meramec* in 2018. We stayed up all night with Tommy while he and JD Wilkes passed the banjo and discussed where it originated from and where the rhythms we commonly use come from. They also talked about how music has been bringing people together, long before there was commercial success associated with singing songs. We would like to thank Tommy for giving us the inspiration and fire to pull off the *Pickin' On Picknic*. We hope Tommy's memory lives on in the songs we sing and share, in the smiles on our faces and friendships we create.

In the words of Tommy Combs "Hootie Hoot."

Ryan Kemp



THURSDAY WORKSHOPS

5pm

Flatpicking Workshop

Location: Lake Gazebo
Instructor: Graham Curry
Flatpickin' techniques from the fabulous flying fingers of Graham Curry.

FRIDAY WORKSHOPS

10am

Flatpick Guitar Workshop

Location: Lake Gazebo
Instructor: Julian Davis
Julian Davis will be showing you some different methods on grasping the pick and playing flowing flatpicking runs. Mostly focusing on the right hand techniques and different methods you can use to make a bolder sound that cuts in jams.

2pm

Fine Time on the 5 String

Location: Lake Gazebo
Instructor: Augie Dougherty
Augie will be going over basics, fun licks, and different styles of playing the 5 string banjo. Learn how to experiment with the banjo in a wide variety of genres.

3pm

Songwriting – The Cosmic Path

Location: Lake Gazebo
Instructor: Ernie Hill
This one hour workshop addresses creativity, melody, lyric, songwriting, and writers' block—all from a non-structured out-of-the-box approach. Lightly touching on the "business", songwriter Ernie Hill will open this session up to your questions throughout the workshop.

SATURDAY WORKSHOPS

9am

Lost Hill Lake Tour

Location: Meet at Main Gate
Instructor: Robert Williford
Rob invites you to tour the beautiful Lost Hill Lake property a.k.a. his backyard. This walk includes a stroll around the lake and trip to the family garden. Gentle uphill walking required. Don't forget your water bottle.

10am

Rod Adjustment Rundown

Location: Pavilion
Instructor: John Henry
This workshop will help you understand what a truss rod is, how it works and how to adjust it properly.

11am

Print making Q&A

Location: Merch Booth
Instructor: Robert Marx
Robert Marx, artist for the 2019 *Pickin'* *On a Picnic* art, is an illustrator known for his work with festival and gig posters. Pick Robert's brain and quell your curiosity with a Q&A session about layout, lettering, illustration, digital translation, printing and printmaking.

11am

Soap Making

Location: Pavilion
Instructor: Christina Reilmann
Soapmaking is both a science and an art. During this demonstration you will learn about: how soap is created, the importance of lye safety, what equipment is needed, what trace means as well as when and how to add

color and fragrance. We will also discuss the difference between hot-process, cold-process and melt and pour soaps. And the importance of a nice long cure time. So come on by, learn about this ancient art that has been modernized for the new world, and just maybe discover your new favorite hobby!

11:45am

Gong Bath

Location: Lakeside Peninsula
Instructor: SiriAtma
Relax and rejuvenate with the healing and soothing sounds of the live gong. All you will need is your yoga mat, or blanket. This experience helps to purify and quiet the mind as the sounds are not harmonious and will reset the brain waves in 3-90 seconds. On a physical level, the sounds release tension and blocks in the body, stimulate a higher functioning of the glandular and nervous systems, increase prana (our vital life force), and improve circulation. Anyone in need of stress reduction, recovering from trauma, struggling with addictions, insomnia, or nerve damage will greatly benefit from these vibrations.

12pm

Instrument Making With Gourds

Location: Kid Zone
Instructor: Ryan Bouma
Teaching people of all ages how to make African style shakers out of natural materials, in this case gourds. We'll make shakers by drilling holes to remove seeds and replacing them with harder beads. Or making "Guirros" by cutting lines with a dremmel tool. I will also briefly show some African/Latin rhythms that can be played with them. Parents can help if we need to use any tools. **This workshop is \$10 per student to cover material cost.**

1pm

Diddley Bow Workshop

Location: Vendor Row, Lawn Sculpture Booth
Instructor: Cody Perkins
Learn how to make an authentic diddley bow from a range of fun and exciting materials in an informative and hands on and supportive environment. Donations for materials are appreciated.

3:30pm

Instrument Tricks, Ham-boning, and Syncopation

Location: Lake Gazebo
Instructor: Willi Carlisle
An all-ages exhibition and workshop of folk-music techniques for aspiring musicians, with banjo, fiddle, guitar, harmonicas, and accordion. Audiences will stomp, hoot, and clap their way into American folk music with a lecture and sing-along covering some of the genre's most beloved sounds.

KIDS WORKSHOPS

Located in Kid Zone

Friday

10am: Painting with Mama Sam
2pm: Make Your Own Instrument

Saturday

10am: Painting with Mama Sam
2pm: Find a Rock and Learn To Wrap It



LIVE ARTIST BIOS



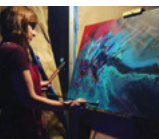
Brandon Arnold

Brandon Arnold is a painter and metaphysical jeweler based out of St. Louis, MO. His work brings out laughter, joy or can make one question belief systems with his paintings. His jewelry line, Third Eye Jewelry, is meant to metaphysically harness the properties of various stones and metals to help increase the frequency of the wearer and surrounding environment.



Bruce Carpenter

Each painting is an invitation to our collective dream. Relationships develop with color, space, and balance as do each work of art. Painting is how I contribute to our growth as one.



M. Gray

M. Gray is a classically trained artist who is most intent upon rendering the cosmos, but also is inspired to create paintings and tapestries that reflect her current obsessions. Often a thread of poetic allegory or literary influence can be present, in addition to musical inspiration. Gray has resided and created in Columbia, Kansas City and St. Louis, Missouri



Zen Junkie

Zen Junkie art is "meditation in motion", unscripted and improvised.

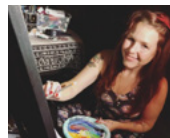


Kammie Reed

Kammie is a self taught artist based in Arkansas who uses mixed medias to create bright, cosmic, and surrealistic scenes. Pulling inspiration primarily from nature and mythology she uses vivid colors to bring her dreamscapes to life as well as incorporating a multitude of symbols within them to place meaning in even the tiniest of details.

Jerika Renee

Born and raised in Pennsylvania, this self-taught artist is laying roots in Nashville and embracing the growing city and it's unique opportunities. Using paint covered fingers, the strokes of a paintbrush, and a deep infatuation for this complicated, strange, and beautiful world, my goal is to bring unity and happiness through color and, create a legacy of love. My admiration for Jane Goodall and Jerry Garcia is a driving force in both my subject matter and life.



Tasha Rose

Tasha Rose is an artist from St. Louis, MO who got her start from following along with Bob Ross. Four years later, she still utilizes those roots creating unique wilderness fantasylands and starry night galaxies with the objective of manifesting utopias for people to get lost in. Tasha also specializes in dot mandalas and animal portraits.



Nicholas K. Tarr

"NEECO" has been creating live art at festivals and events and building his craft as a performance painter for several years. Inspired by the music and his peers, Nicholas creates stunning large scale art with rhythm and grace. His unique style is easily identified by his vibrant colors and gestural line work. Nicholas is passionate about creating and collaborating and is most satisfied when he is painting to the twangy sounds of bluegrass.



Wendell Phillips 'Phil' Berwick

Merferd has become an icon of brotherly love, seen on buildings and in trees throughout St Louis. In a rare appearing, Merferd will be available for purchase. Wendell Phillips 'Phil' Berwick will be live painting at Pickin', so plan on pickin' one up for your tree or fence or house! www.treetoons.com





GREAT TUNES

pair well with

GREAT BEER

@4HANDSBREWINGCO



LOST HILL LAKE

Weddings + Events



WEDDINGS



FESTIVALS



RETREATS



GLAMPING

PRIVATE, OUTDOOR VENUE
LOSTHILLLAKEEVENTS.COM
HELLO@LOSTHILLLAKEEVENTS.COM

PICKIN' ON PICKNIC

STAGE SCHEDULE

THURSDAY 7/11

6PM ARMCHAIR BOOGIE
8PM KIND COUNTRY
10PM OLD SALT UNION
12AM THE HILLBENDERS



FRIDAY 7/12

12PM STORY SONGS
WITH ERNIE HILL
3PM WOODSHINE
4:30PM GINSTRINGS
6PM ARKANSAUCE
8PM JULIAN DAVIS
& THE SITUATION
10PM LEFTOVER SALMON
12:30AM MILES OVER
MOUNTAINS

SATURDAY 7/13

12PM BAND COMPETITION
3PM CHICAGO FARMER
4PM GRASSFED
5PM THE SWEET LILLIES
6PM THE PO' RAMBLIN' BOYS
7PM KASSIE & MARVIN'S WEDDING
8PM ADAM GREUEL & FRIENDS
CELEBRATE THE LIFE & MUSIC OF JEFF AUSTIN
10PM LEFTOVER SALMON
12:30AM ONE WAY TRAFFIC

SUNDAY 7/14

11AM SUNDAY MORNING
RIVER REVIVAL



MAIN STAGE



Healthcare
Technology
Advisors

SIDE STAGE

BAND BIOS

Armchair Boogie

Rising from the forests and rivers of central Wisconsin, Armchair Boogie's high-energy take on the Jamgrass genre fuses intricate arrangements of acoustic guitar and banjo with the funky back beats of electric bass and drums.

Augie Dougherty (banjo, vocals) and Ben Majeska (guitar, vocals) started playing together in the fall of 2014 while attending the University of Wisconsin- Stevens Point. Within a year, their musical collaborations led to the formation of Armchair Boogie. Eager to expand their sound for a bigger stage, Augie and Ben recruited bassist Eli Frieders and drummer Dan Waterman to fill out the band's four-piece configuration. Armchair Boogie solidified their current line-up in the spring of 2017 when Denzel Connor took over for a departing Dan on drums. In conjunction with the release of their debut self-titled album, the band moved to Madison, WI- a jumping off point from where Armchair Boogie has become a regular on the upper Midwest festival circuit while also sowing roots in the Rocky Mountains.

Kind Country

Kind music for kind people. Kind Country is a Minneapolis-based band that plays American standards as well as their own brand of Cosmic American music. Since their formation in 2012, the band has focused on creating live performances with high levels of improvisation and energy. They share a goal of creating a moment of musical bliss that can be shared by audience members and band alike.

The band is a six-member ensemble featuring Mitch Johnson (guitar), Brandon Johnson (guitar), Max Graham (mandolin), Joe Sheehan (bass), Chris Forsberg (violin), and Chris Wittrock (drums).

Old Salt Union

A great band is more than the proverbial sum of its parts, and in the pursuit of becoming something that can cut through the clutter of YouTube stars and contest show runner-ups, a great roots music band must become a way of life. Less likely to rely on production or image, they've got to connect with their audience only through the craftsmanship of their songs, the energy they channel on the stage and the story that brings them together.

Old Salt Union is a string band founded by a horticulturist, cultivated by classically trained musicians, and fueled by a vocalist/bass player who is also a hip-hop producer with a fondness for the Four Freshmen. It is this collision of styles and musical vocabularies that informs their fresh approach to bluegrass and gives them an electric live performance vibe that seems to pull more from Vaudeville than the front porch.

The HillBenders

Formed in April of 2008, and still touring with the original lineup, The HillBenders have firmly established their presence as one of the most energetic and engaging progressive acoustic bands on the scene and they continue to wow audiences from stages around the country and around the world. Just over three years ago the band shifted their focus away from original music to tackle their recent critically-acclaimed "Tommy: A Bluegrass Opry" release. This was a strategic choice for a band that first made their name with a barrage of catchy, original songs. While it proved to be an extremely successful decision, vaulting the band onto the global stage, it took the bands time and attention away from their roots and from the very music that started their career. Now The HillBenders have shifted their focus back onto their originals and have released their fourth studio album, appropriately and eponymously titled "The HillBenders". Many

of the songs have been shared in live settings over the last couple years as the band toured in support of "Tommy" but never have they been recorded until now.

Story Songs With Ernie Hill

While thinking about events for the 2015 John Hartford Memorial Festival, I came up with this concept purely out of curiosity. What if I selected three or so songwriters who specialize in story songs, and host a presentation/panel discussion consisting of original story songs and individual processes? The idea being, give the audience (and me) an idea about the individual creative process. I have an idea how mine works and I am curious to the extreme that I wrote a book about it.

Story Songs Workshop is not a "hands on" workshop. It really is not a "workshop" rather, it is a concert/panel discussion about creativity. Keep reading to learn exactly what this is about. "Story Songs with Ernie Hill" has grown in popularity as folks who love stories are given a look inside the heads of folks who "make them up". Since it's premier, Story Songs has grown in popularity and appearance, now being presented also at the Walnut Valley Festival, Winfield Kansas, and *The Pickin' On Picknic* held at St. Clair MO! Guest songwriters include and have included Chris Jones and Gina Furtado of Chris Jones and the Night Drivers, Chicago Farmer, Ryan Spearman of the Short Round Stringband, Juni Fisher, Wil Maring, Colin O'Brien, Old Man Luedecke, Ginger Boatwright, Nathan Blake Lynn, Giri and Uma Peters, Micahlan Boney, Kenny Cornell, and Mike Oberst of the Tillers, Andrew Morris and Julie Bates (aka The Matchsellers), Alaina Hawf of The Whispering Willows, Bill Poss, Kelly & Donna Mulholan (aka Still On the Hill), Willi Carlisle, Lily B Moonflower, Xaris Waltman and Walter Greiner.

How does it work? I start the set with an original story song and then open up a discussion. We pass it on down the line and in the time allotted we each perform original story songs with enlightening discussion.

Aren't all songs Story Songs? Well, no. A large percentage of top 40 mainstream songs are "feeling" songs. Songs that express love or the opposite. A story song is just that. It tells a story, sometimes taking you to a different environment. It's that simple, but where do they come from? How does a songwriter "get" their story? That's what these sets are all about. It really is different with each songwriter. I've written a book, a short introspective look inside my own mind, the minds of a few others, and some research opinions. It's called "The Cosmic Path to Melody and Lyric". Click here to read more about it. This little mind journey is illustrated by the artist Jon Griffin. Please check it out and consider talking with me about presenting this concept at your event whether it's a great big festival or a tiny intimate listening room.

Woodshine

Woodshine hails out of Franklin County, MO, fabricated in a tractor shed out of too much free time and \$9 cases of PBR over 6 years. With a driving musical force, and uninhibited support from the locals, they pursued their vision of a good time with acoustic instruments. They succeeded.

With a studio album in the works, Woodshine has added several original tunes to their extensive library of covers. Perhaps one of the relevant things about their cover choices is the original spin they add by using a bluegrass blueprint to build boot-stomping character. With selections from the 80's, 90's, several traditional bluegrass numbers, and even a hip-hop song or two, audiences are often heard saying, "These guys ROCK!"



With the addition of Brittany Griffith on fiddle, original members Alex Ferguson on mandolin and guitar, Matt Diener on guitar and banjo, and Erik Ferguson on bass, they are sure to get you out of your seat!

Ginstrings

With 33 interchangeable strings and vibrant vocal harmonies, Ginstrings is an acoustic progressive string band driven by an indescribable passion for music.

Comprised of members who draw from diverse musical backgrounds, the group comes together to create a sound that reflects just that. While a shared love for music, collaboration, and the human experience gives them a constant desire to search for sound and create something new, a combination of optimism and realism keeps their feet on the ground with a healthy dose of head in the clouds.

These boys have been tearing it up since 2012. Eli Bentley (banjo, dobro & vocals), Gavin Haskin (mandolin, fiddle & vocals), Jon Miller (guitar & vocals), Matt Blake (bass & vocals), and John Lane (fiddle) round out the quintet.

With two albums under their belt and a third on the way, Ginstrings is one of the hardest-working independent string bands out there and they've made it their mission to carve out a place for themselves in this vast macrocosm of music.

Arkansauce

Arkansauce is a genre-hopping, four-piece string band from northwest Arkansas, bending the rules and blurring the lines between bluegrass, newgrass, folk, Americana, country, blues, and funk. With a loyal following growing every day in the Natural State and along their tour routes, the band is proud to be stepping into a hard-driving sound unique to the Arkansas quartet.

An Arkansauce show is riddled with improvisational guitar, banjo, and mandolin leads, paired with powerful harmonies and heartfelt songwriting, all held together by deep foot-stompin' bass grooves. There's an undeniably intimate connection between the band and their fans that's contagious and leaves everyone in front of, and on the stage wanting more.

We're so excited to be able to have the boys back again this year because after all, what's a Picknic without a little sauce?!

Julian Davis & The Situation

Born and raised in Pittsburg, Kansas, Julian Davis is a test case for the modern era; everything he knows about playing instruments, he learned from YouTube. Self-taught, with help, he picked up the guitar when he was four, and in the last three years has learned the mandolin. From a young age, he was drawn to the electricity of the stage, and the artistry that musicians wield while conducting a crowd.

Julian wasted no time once out of school, immediately hitting the road with guitar and mandolin in tow. He traveled for a year with a band and struck out on his own afterward. From coast to coast and border to border, Julian puts his energy towards perfecting his craft and delivering joy, one song at a time. There's nowhere he'd rather be than onstage, singing to a crowd.

In 2018, Julian and his band, Julian Davis & the Situation, toured many festivals and venues. In July of 2018, Julian was Artist at Large for *Pickin' On Picknic* where he had the chance to showcase his versatility and talents with a variety of bluegrass legends. Julian's sit in with Jeff Austin Band sparked a significant change and an extraordinary opportunity in Julian's journey as a musician: in early 2019, Julian joined the Jeff Austin Band on lead guitar. Julian still performs with his band, Julian Davis and the Situation, with which he continues to develop an LP.

Pickin is proud to have Julian back year after year and to watch him grow into the amazing musician he is today! If he has somehow slipped past your radar, don't miss your chance to see him at the Picknic with The Situation and with The Jeff Austin Band, this kid is going places!!

Leftover Salmon

For the past quarter-century, Colorado's Leftover Salmon has established itself as one of the great purveyors of Americana music, digging deep into the well that supplies its influences; rock 'n' roll, folk, bluegrass, Cajun, soul, zydeco, jazz and blues. They are firmly settled in the long lineage of bands that defy simple categorization, instead setting their own musical agenda.

During Leftover Salmon's twenty-five plus years as a band they have headlined shows and festivals from coast to coast, released nine albums, and maintained a vibrant, relevant and influential voice in the music world. Over that time, Leftover Salmon's sound has grown and evolved while staying true to the roots and guiding spirit of the band's founding members – mandolinist/singer Drew Emmitt and guitarist/singer Vince Herman. Leftover Salmon are considered to be the architects of what has become known as Jamgrass – where bands clearly schooled in the traditional rules of bluegrass break free of those rules through non-traditional instrumentation and an innate ability to push songs in new psychedelic directions live. Today, Leftover Salmon endures as a vital and significant presence and holds an unequivocal stature as a truly legendary band.

Miles Over Mountains

Miles Over Mountains is a progressive bluegrass band based in McHenry, IL. Their live shows are high energy, centered around an arsenal of original material and refreshing variety of cover songs served up in their own unique style. Touring through their fifth year, Miles Over Mountains continues to turn heads across the nation as their momentum, fanbase and touring schedule continues to grow.

Band Competition

The Real Nice Clarks

The Real Nice Clarks are a distinctly unique blend of bluegrass, old time, and vintage country that is played with energy, soul, and swagger.

Seed Tick Ridge

Seed Tick Ridge is an acoustic ensemble dedicated to crossing boundaries of time and musical genres. With inspiring harmonies and melodic instrumentation, Seed Tick Ridge will take you on a journey full of emotion and wonder. Stylistically, you can expect Seed Tick Ridge's original music to flow between tunes that echo the founding roots of mountain music to progressive Caribbean grass and all places in between. STR is comprised of Glenn, Kathy and Glenn Robertson Jr. The trio have been lovingly creating music together as a family since 1995. In the most recent years, Seed Tick Ridge has been utilizing the songwriting talents within the band and are becoming known for their original performances.

Scrambled

Scrambled is a band with great versatility and an abundance of energy. Three good friends started the band together and decided to begin pursuing what they call Bluesgrass. According to Scrambled, bluesgrass is a groovy mix of bluegrass, blues, rock, reggae, country, and a little folk/Americana.



Armugia Ridge Runners

Armugia Ridge Runners is a band from the Amarugia Highlands. The Amarugia Highlands is a conservation area located South of Freeman, Missouri. The Amarugia Highlands have historically been home to mysteries, moonshiners and music. Armugia Ridge Runners' connection to this land and love of the rich history has drawn them together to perform a mix of folk, blues, old country, and bluegrass.

Chicago Farmer

Lyrical driven, Chicago Farmer delves into the social and political issues of today's world, taking it all in and putting it back out through music as a commentary on modern times in the Midwest. With his unfeigned and relatable approach, Chicago Farmer has earned a place in the heart of this generation's rise of protest songs. He composes music written and sung by and for the working man, the "regular person", bringing to mind modern-day folk tales.

Grassfed

Grassfed is a quick-picking string band. Pivoting on the foundation of bluegrass, Grassfed entwines tradition with an eclectic array of influences. Forged by songwriters and driven by instrumental conversation, the band brings a punching sound all its own.

Based out of Kansas City, Grassfed tours nationally across the United States, and has performed internationally in Scotland, and France. Combining genuine lyrics and shredding instrumentals, Grassfed is a must see live experience.

The Sweet Lillies

The Sweet Lillies' high-energy, melodic tunes have quickly captured the hearts of fans in Colorado and beyond. The band, formed in November of 2013, credits its appeal to the original and compelling songwriting of three women who share an unwavering commitment to life on the road. The magnetic combination of Julie Gussaroff on the upright bass, Becca Bisque on the viola, Melly Frances on percussion and lead vocals and Dustin Rohleder on acoustic guitar gives this band a rare and alluring sound. As testament to their appeal, The Sweet Lillies have already shared the stage with the likes of Peter Rowan, George Porter Jr., Steve Kimock, Vince Herman of Leftover Salmon, Kyle Hollingsworth and Jason Hann of The String Cheese Incident, Andy Hall of The Infamous String Dusters, Jeff Austin, and Bridget Law (founding member of Elephant Revival). Based out of Colorado's Front Range, The Sweet Lillies are continually expanding their audience and reach with a contagious love of music and a get-up-and-dance attitude that spreads lots of love and smiles.

The Po' Ramblin' Boys

The Po' Ramblin' Boys energetic and unapologetically vintage sound points to the golden era of bluegrass music, all the while appealing to a fresh audience hungry for authenticity. It's music for the fans of Monroe, Martin, Scruggs, and Stanley but also for fans who discovered bluegrass in the age of Billy Strings, Trampled by Turtles and Greensky Bluegrass. Mixing in healthy doses of their own original material, The Po' Ramblin' Boys are breath of fresh air on the roots music scene today. The Po' Ramblin' Boys are the proud recipients of the 2018 IBMA Emerging Artist of the Year award.

Adam Greuel & Friends Celebrate the Life & Music of Jeff Austin

We have an amazing crew of musicians that will be pulling together to honor the life and music of the late Jeff Austin to fill the void left in our hearts and on our schedule. Jeff Austin was a dear friend of the Pickin' Festival family. He was always excited to come and play our festival and to spend time with his family in this special place. Jeff passed away on June 24th, 2019. Please join us at 8pm Saturday for an outpouring of love and celebration of the influence and joy that Jeff brought to our lives and to bluegrass music.

Adam Greuel, from Horseshoes & Hand Grenades, and friends help host the all-star band with sit-ins from Kyle Tuttle, Julian Davis, Greg Garrison, Jason Scroggins, Vince Herman and more!

We will also have some amazing raffle opportunities with goods from our vendors, sponsors, and musicians to help raise money for Jeff's Sweet Relief Musicians Fund. We will be there standing side by side celebrating the light that Jeff brought to us all. Join us, won't you?

One Way Traffic

One Way Traffic is a St. Louis-based band with an eclectic sound influenced by bluegrass, Americana, folk and blues. All members are songwriters aiming to keep it fresh and share their experiences with listeners through a unique approach and an honest delivery. One Way Traffic is made up of seasoned musicians that are hungry, young, and genuinely enjoy working together – and it shows in live performances. What gives the band an undeniable edge is their outlook on making music: they strive to connect.

Forming less than a year ago, One Way Traffic has already performed at over 50 shows, multiple festivals and two sold-out shows. If they aren't already, be prepared to have a new favorite band!

Sunday Morning River Revival

Wash away your sins from a long festival weekend with the Sunday Morning River Revival. Head to the side stage to soothe your soul with some good ol' gospel bluegrass. Join the congregation as an audience member, or grab your instrument and jam along. The River Revival is a Pickin' Festival tradition that is sure to close out the festival on a blissful note.



WWW.CBDBYCM.COM

CRYSTAL MORGAN 60 DAY 'EMPTY BOTTLE' MONEY BACK GUARANTEE

INDEPENDENT AFFILIATE

1-833-CBDBYCM

1-833-223-2926

THE BEER RETRIEVER CERTIFIED

naked vine

A WINE AND WHISKEY BAR LIKE NO OTHER.

LIVE MUSIC TH/FRI/SAT

← ☺ ☹ ☹ ☹ →

NAKED VINE | 1624 CLARKSON ROAD
434.936.0711 | NAKEDVINE.NET

BUCKHORN BLUEGRASS FESTIVAL

AUG 30 - SEPT 1, 2019

PULASKI COUNTY PT WOOD SHINE CLUB, WAYNEVILLE, MISSOURI

ARKANSAS - ORAL ACATA & THE SWEET NOTHING'S - CHUCKY WAGGS & THE COMPANY OF RAGGS - STEPHEN BENDER - CHARLIE - JUST STRANGERS - ADAM JOHNSON BAND & THE DIRT STINGS - DAVE GERALD - TEXAS TURTLES - PAGE VAN HORN

2019 TICKET INFO: \$100 - \$125 (includes food, drink, and a commemorative t-shirt). \$250 - \$300 (includes food, drink, a commemorative t-shirt, and a commemorative hat). \$500 - \$600 (includes food, drink, a commemorative t-shirt, a commemorative hat, and a commemorative bag). \$1000 - \$1200 (includes food, drink, a commemorative t-shirt, a commemorative hat, a commemorative bag, and a commemorative guitar). \$2000 - \$3000 (includes food, drink, a commemorative t-shirt, a commemorative hat, a commemorative bag, a commemorative guitar, and a commemorative hat).

JOSEPH MEYER CO.

FOAMING AFTERSHAVE

PROUD SUPPORTER OF
PICKIN' ON PICKNIC FESTIVAL

FIND US AT JOSEPHMEYERCLUB.COM

Clearview

Pressure Washing

RESIDENTIAL AND COMMERCIAL SERVICES

We are your local experts at washing the toughest, hardest to access areas. We take pride in our work and have become the trusted company to pressure wash.

Get a FREE estimate on our website!

powerwashmissouri.com



SEE THIS GUY AT PICKIN'?

BUY HIM A BEER & GIVE HIM A HUG BECAUSE ITS HIS BIRTHDAY!!

HAPPY BIRTHDAY, ALEX CONTRERAS!!

- FROM THE PICKIN' TEAM

Camp Manitoba is a proud supporter of Pickin' on Music Festivals

CAMP MANITOWA

EST. 2010

BEAD LAKE - CEDAR POINT

Two locations in Southern Illinois
Consider us for your next family reunion, wedding, live music festival, church or scout group retreat!

www.campmanitowa.com
(314) 375-6766
campmanitowa@gmail.com



KDHX

**building community
through media**

88.1 KDHX St. Louis



REGIONAL

d e r m a t o l o g y



Sarah Jensen, M.D.

Sarah Jensen, M.D. is a dual board certified Dermatologist and Dermatopathologist at Regional Dermatology, LLC.

Dr. Jensen earned her medical degree at St. Louis University School of Medicine and completed her Residency in Dermatology in the Department of Dermatology at SLU. She completed her Dermatopathology fellowship at Boston University School of Medicine.

Dr. Jensen specializes in a wide variety of skin issues including medical, surgical and cosmetic dermatology as well as Dermatopathology and Mohs surgery.



Andrea Bova

Board Certified Nurse Practitioner

Andrea is a Board Certified Family Nurse Practitioner by the American Nurse Credentialing Center. She practiced as a registered nurse in dermatology from 2008-2015 and joined Regional Dermatology after her FNP certification in the Fall of 2015.

She and her husband Matt live in Crystal City with their dog Chance. They enjoy spending time bird hunting with Chance, fishing, and horseback riding.

Our office is located at 1463 Hwy 61, Suite B, Festus, MO 63028

**For more information about Dr. Jensen and Regional Dermatology
visit regionaldermatology.com or call 636-933-7600.**

ADVENTURE TRIBE RETREATS PRESENTS...

New Moon

GATHERING

AUG. 30 - SEP. 2

ST. CLAIR, MO
LOST HILL LAKE

A 4-DAY, 3-NIGHT ALL-INCLUSIVE RETREAT FEATURING...

CAMPING • DELICIOUS PLANT-BASED MEALS • OUTDOOR YOGA CLASSES
GIANT COMMUNITY BONFIRE • GUIDED HIKES • MINI FLOAT TRIP
MASSAGES • PERSONAL DEVELOPMENT WORKSHOPS • MUCH MORE!

FOR TICKETS AND MORE INFO VISIT:
ADVENTURETRIBERETREATS.COM
@ADVENTURETRIBERETREATS

Adventure Tribe
RETREATS



Don't Get Left Behind

www.MoonBeamMandolins.com



GREEN TECH AND SUSTAINABLE RESOURCE DEVELOPMENT
FOR INNOVATIVE VALUE ADDED APPLICATION

WWW.EVOLAS.COM

Is YOUR data safe from the dark web?

WE IDENTIFY
COMPROMISES
Throughout your organization.

**WE GO
INTO THE
DARK
WEB
TO KEEP
YOU
OUT OF
IT.**

WE MONITOR
24/7 365

- Hidden chat rooms
- Private websites
- Peer-to-peer networks
- IRC (internet relay chat) channels
- Social media platforms
- Black market sites
- 640,000+ botnets

WE REPORT
80,000+
Compromised emails daily.

Healthcare Technology Advisors can find the answers.
Visit the Registration booth or htadvisorsllc.com/darkwebscan
to get a FREE dark web scan to find out!



Healthcare
Technology
Advisors

**SAFEGUARD
YOUR BUSINESS** **PROTECT
YOUR ASSETS**

DARKWEB ID

Deadhead Productions and Railroad Earth Present

HILBERRY



THE HARVEST MOON FESTIVAL

Railroad Earth x2

Leftover Salmon

Galactic

Keller & The Keels

Jeff Austin Band

Jon Slickley Trio

Mountain of Venus Reunion

Arkansauce

Grassfed

Red Oak Rose

Whiskey for the Lady

McMaw and the Squirrel Chasers

Del McCoury Band

Billy Strings

Yonder Mountain String Band

The Travelin' McCourys

The Lil Smokies

Kitchen Dwellers

Handmade Moments x2

Opal Agafia & The Sweet Nothings x2

Friends of the Phamily

Chucky Waggs & the Company of Raggs

Skye Pollard

October 10 ~ 13, 2019

At the Farm Campground and Events ~ Eureka Springs, Arkansas